

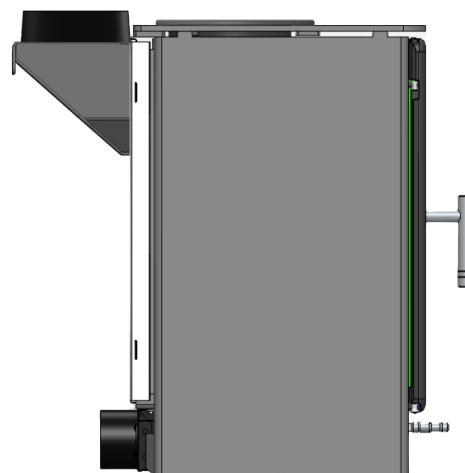
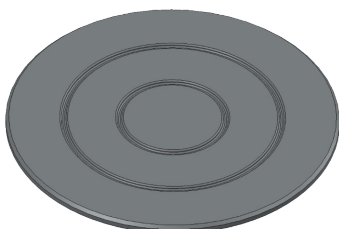
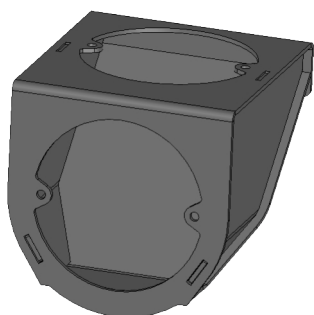


Fitting the Cast Iron Cooktop & Rear-to-Vertical Flue Adapter

Instructions:

This procedure outlines the steps for securely installing the cast iron cooktop and the rear-to-vertical flue adapter. For best results, complete these installations *prior to positioning the stove* to ensure ease of access and proper alignment.

To ensure ease and efficiency, it's best to install these parts before the stove itself is installed. This allows for better access to components and makes alignment and securing steps, such as fitting the top plate and installing the cooktop, easier to complete.



Tools Required to Complete This Job

- Drill
- M8 Drill Bit
- Socket Set
- Open Ended Spanners
- Pliers

Parts Supplied in the Pack

- Cast Iron Cooking Top Plate
- Rear to Vertical Adapter
- 30mm M6 Grub Screw (x 2)
- M6 Flange Nuts (x 6)
- M6 Flange Bolts (25mm, x 4) already on stove

Step A : Initial Disassembly and Preparation for Rear Flue Installation

1. Remove the Top Plate

- Carefully lift off the top plate of the appliance. **Note:** The top plate is 8mm thick and heavy; handle with caution to avoid injury.

2. Remove M6 Bolts from the Top Flue Exit

- Locate and remove the M6 bolts securing the top flue exit of the appliance.

3. Detach the Rear Convection Panels

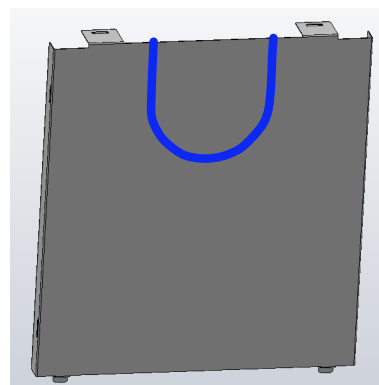
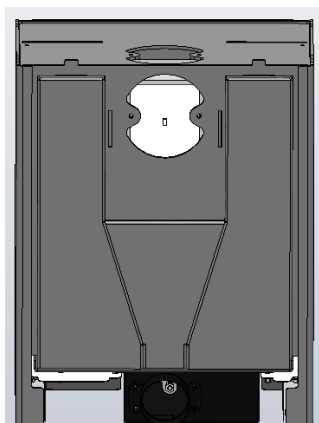
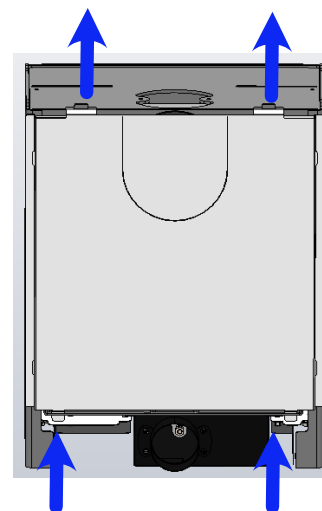
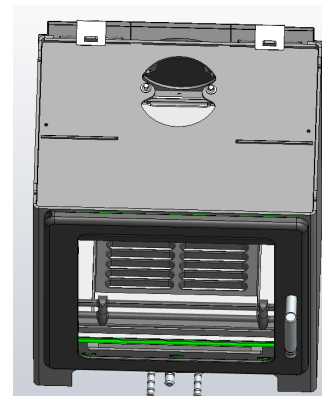
- Lift off the rear convection panels. These should come off easily with an upward motion.

4. Separate the Laser-Cut Breakout Sections on Galvanized Panels

- Use pliers to break the 1mm link sections of the laser-cut breakouts on the galvanized panels.
- Carefully wiggle the breakout section back and forth until the link snaps, ensuring a clean separation.
- This modification creates space to allow the rear flue to fit properly.

5. Remove the Rear Exit Cover Plate

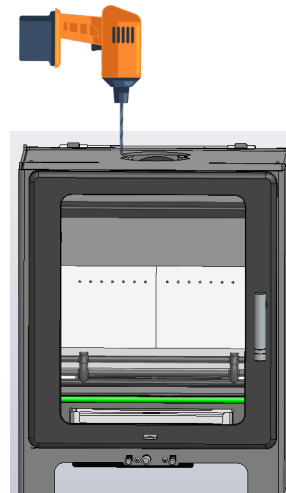
- Unscrew and remove the rear exit cover plate by undoing the two M6 bolts securing it.



Step B: Preparing and Installing the Rear to Vertical Adapter

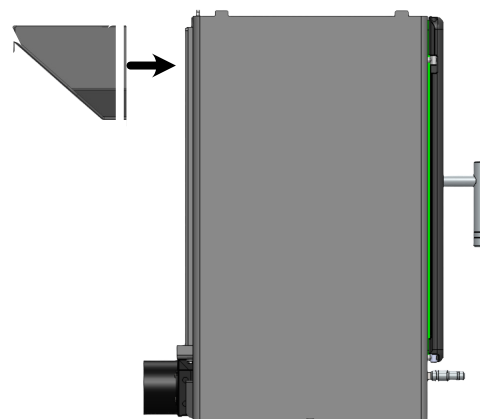
1. Enlarge the M6 Thread Hole on the Top Exit of the stove

- Using an M8 drill bit, carefully drill out the existing M6 thread hole located on the stove body top exit.



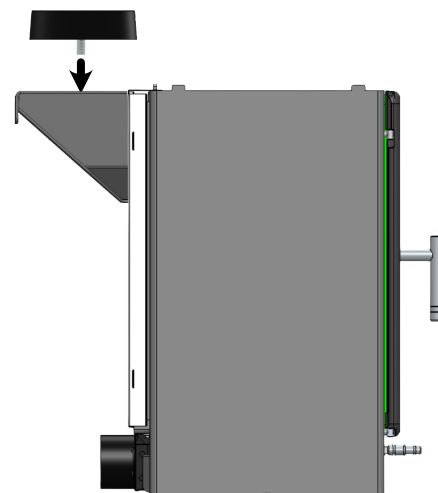
2. Install the Rear-to-Vertical Adapter

- Position the rear-to-vertical adapter in the rear exit location
- Insert two M6 bolts through the adapter and secure them by tightening M6 nuts with a socket set. Ensure a tight seal to prevent any air leaks.



3. Attach the Cast Collar

- Position the cast collar onto the rear-to-vertical adapter.
- Tighten the two M6 bolts using M6 nuts.
- Ensure they are tightened firmly for a secure fit.



4. Reattach the Rear Convection Panels

- Reinstall the rear convection panels by aligning them with the two lower slots.
- Secure them by hooking the top of the panels over the upper mounting locations.

Step C: Internal Adjustments and Cooktop Installation

1. Remove Internal Components

- Open the door and carefully remove the base grate, log retainer, and base bricks.

2. Remove Left Side Brick and Baffle Plate

- Detach the left side brick, followed by the baffle plate, to allow access for further adjustments.

3. Install Grub Screws on the Cast Iron Cooktop

- Fit two 25mm x 6mm grub screws into the cast iron cooktop.

4. Reinstall the 8mm Top Plate

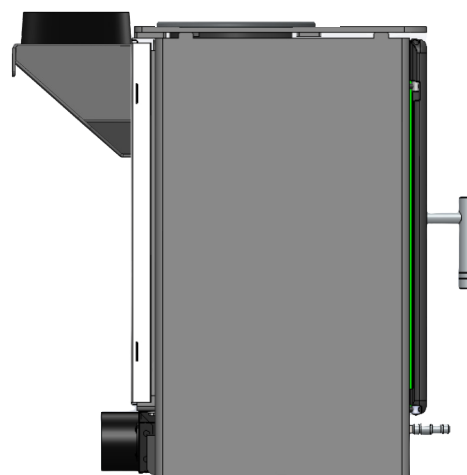
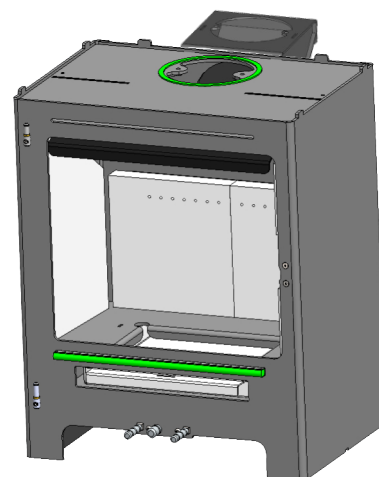
- Refit the 8mm top plate back into position, ensuring all location points are snug and properly aligned.

5. Position Cast Iron Cooktop

- Carefully lower the cast iron cooktop with grub screws attached, aligning them to slot through the newly drilled 8mm holes.

6. Secure the Cooktop from Inside the Chamber

- From inside the chamber, attach washers and M6 nuts onto the grub screws.
- Tighten securely with a socket set to ensure a stable, secure fit.



Step D : Reassemble Brickset and Internal Components

1. Reinstall the Baffle Plate

- Place the baffle plate back into its original position inside the stove.

2. Reinstall the Left Side Brick

- Position the left side brick securely in its designated spot.

3. Replace the Base Bricks, Cast Iron Grate, and Log Retainer

- Place the base bricks, then fit the cast iron grate and log retainer back into their positions.

4. Close the Door

- Once all components are securely in place, close the stove door.

Mendip Stoves Ltd, 31.10.2024

Code: M90500-07-17-99-00

Email: info@eurostove.co.uk

