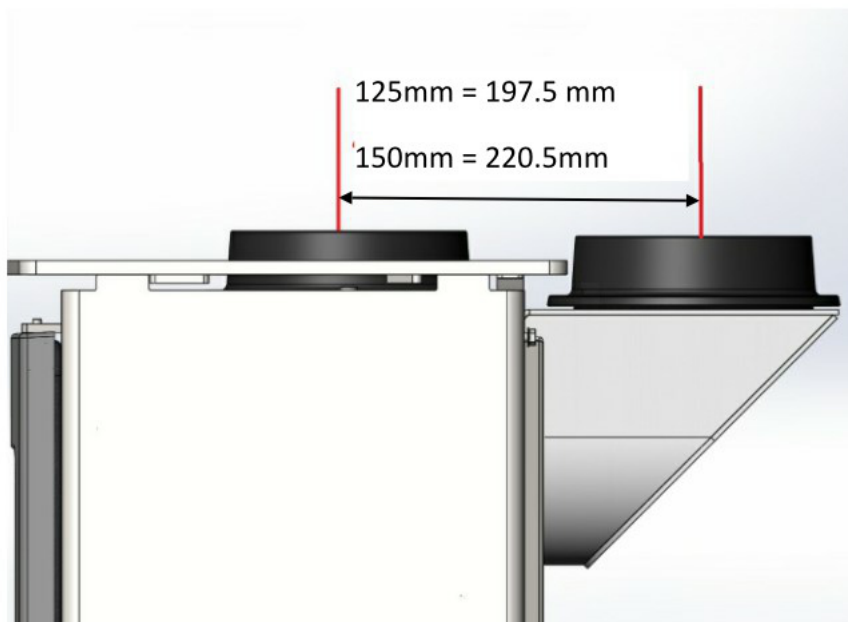


Rear Flue Vertical Extension

125mm & 150mm collars

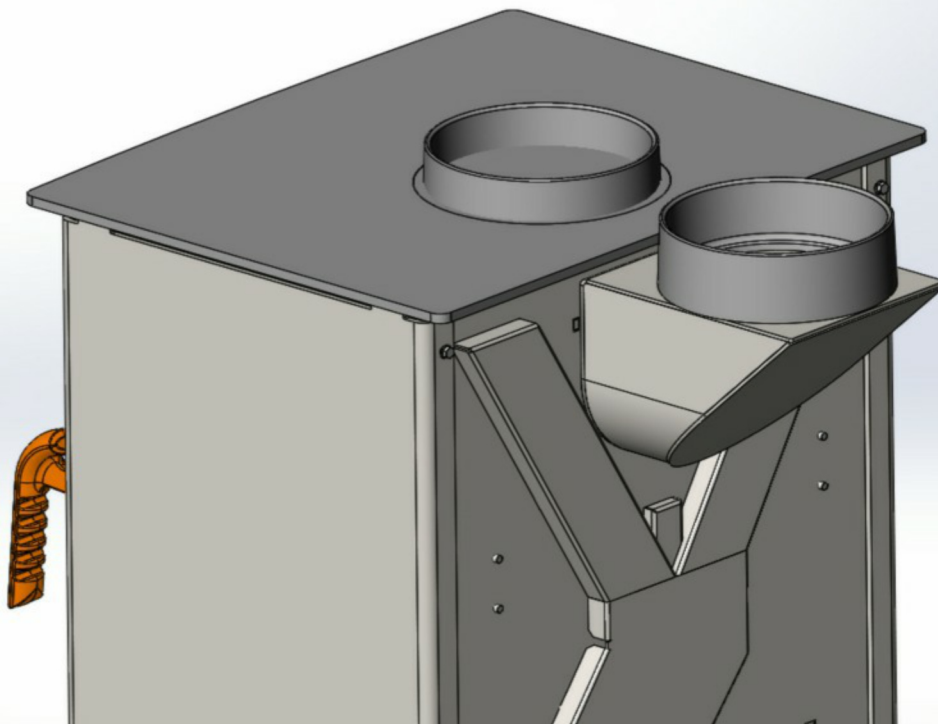


MP Mendip 125mm Ø Rear Flue Vertical Extension

M90500-07-11-00-01

MP Mendip 150mm Ø Rear Flue Vertical Extension

M90800-07-11-00-00



Rear flue vertical extension suitable for the following stoves:

125mm Loxton 3 to 5kW / Churchill 5kW/ Woodland 5kW / suitable for use on the Beltane Brue & Chew

150mm Loxton 8 & 10kW / Churchill 8 & 10kW / Woodland Large

The vertical extension should be treated as a single walled flue pipe when installing near combustible surfaces.

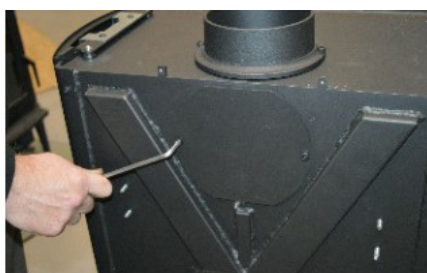
How to fit

1. Remove both top plate and rear heat shield. These can be held on by 4 screws or just lift up and off.

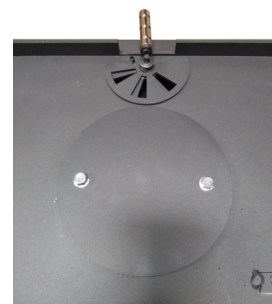
The knock out on the rear heat shield should be removed to allow for the adaptor when fitted.



2. Remove the rear flue outlet cover plate. This can be 10mm bolts or Allen screws.



3. Remove the flue collar from the top of the stove and fit the blanking plate from the rear over the hole using the screws or bolts the collar was fitted with.



4. Attach the adaptor to the rear of the stove using the screws or bolts that held the blanking plate to the stove.



5. Using the 2 screws and nuts supplied with the adaptor attach the flue collar to the adaptor.

6. Refit the rear heat shield and top plate. If any screws were used ensure that they are refitted to the stove.

7. The outer top flue cover plate can then be placed in the hole on the top plate.

